

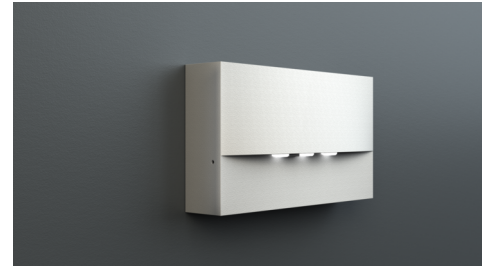


**Art.-Nr: WAF428SC**  
**Safety luminaire**  
**Wall mounting, SelfControl (SC), 8 h, , IP20, Zinc die-cast, white**

High-grade zinc die-cast safety luminaire for surface mounting on the wall.

The radiating characteristics run parallel to the wall to help perfectly illuminate escape and emergency routes.

Automatic monitoring of safety luminaire with SelfControl.



More information

[www.rp-group.com/en/item/WAF428SC](http://www.rp-group.com/en/item/WAF428SC)



## TECHNICAL DATA

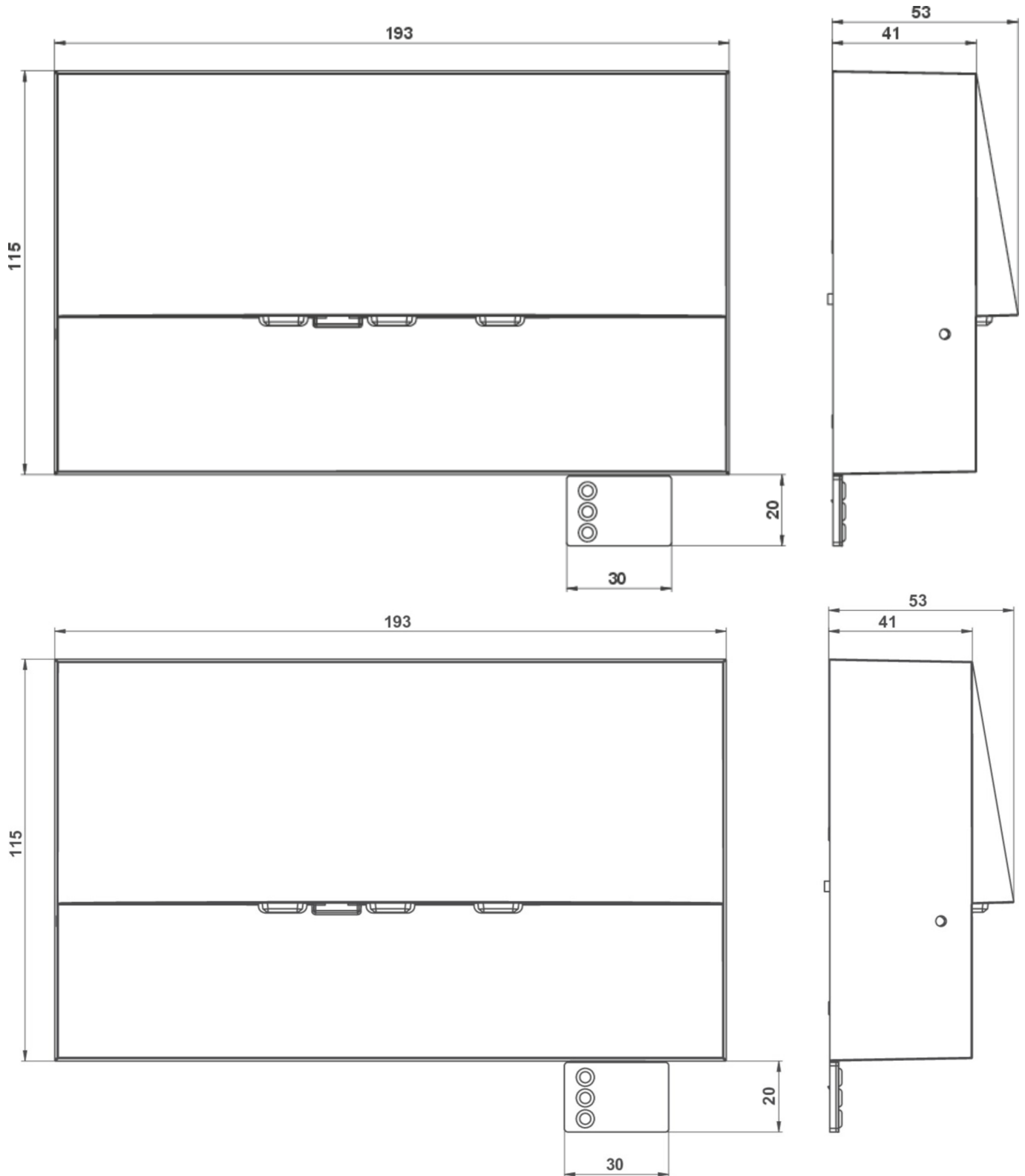
|                        |                      |
|------------------------|----------------------|
| Luminaire type         | Safety luminaire     |
| Mounting               | Wall mounting        |
| Pictograph             | No                   |
| Illuminant             | LED                  |
| Housing material       | Zinc die-cast        |
| Housing color          | white                |
| Protection type (IP)   | IP20                 |
| Impact resistance (IK) | 4                    |
| Certification          | WEEE, CE             |
| Insulation class       | 2                    |
| Monitoring             | SelfControl (SC)     |
| Bridging time          | 8 h                  |
| Battery                | LiFePO4 6,4 V/1,2 Ah |
| Power max.             | 2,6 W                |
| Power DS               | 1,7 W                |
| Power BS               | 0,9 W                |
| Ambient temperature DS | -5 °C - 35 °C        |
| Ambient temperature BS | -5 °C - 40 °C        |
| Depth                  | 193 mm               |
| Width                  | 53 mm                |
| Height                 | 115 mm               |



|                         |               |
|-------------------------|---------------|
| Weight                  | 0.15          |
| Weight incl. packaging  | 0.18          |
| Luminous flux mains     | 70 lm         |
| Luminous flux emergency | 70 lm         |
| EAN                     | 4262483023358 |



TECHNICAL DRAWING



As of: 04.11.2024 - Subject to technical changes and errors.