

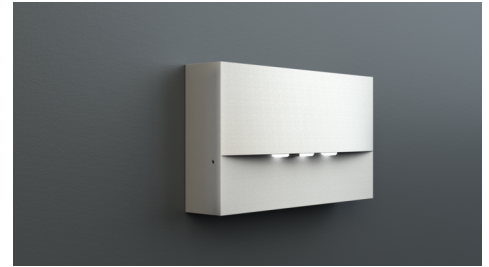


**Art.-Nr: WAF428SC-E**  
**Safety luminaire**  
**Wall mounting, SelfControl (SC), 8 h, , IP20, Zinc die-cast,**  
**Stainless steel**

High-grade zinc die-cast safety luminaire for surface mounting on the wall.

The radiating characteristics run parallel to the wall to help perfectly illuminate escape and emergency routes.

Automatic monitoring of safety luminaire with SelfControl.



More information

[www.rp-group.com/en/item/WAF428SC-E](http://www.rp-group.com/en/item/WAF428SC-E)



## TECHNICAL DATA

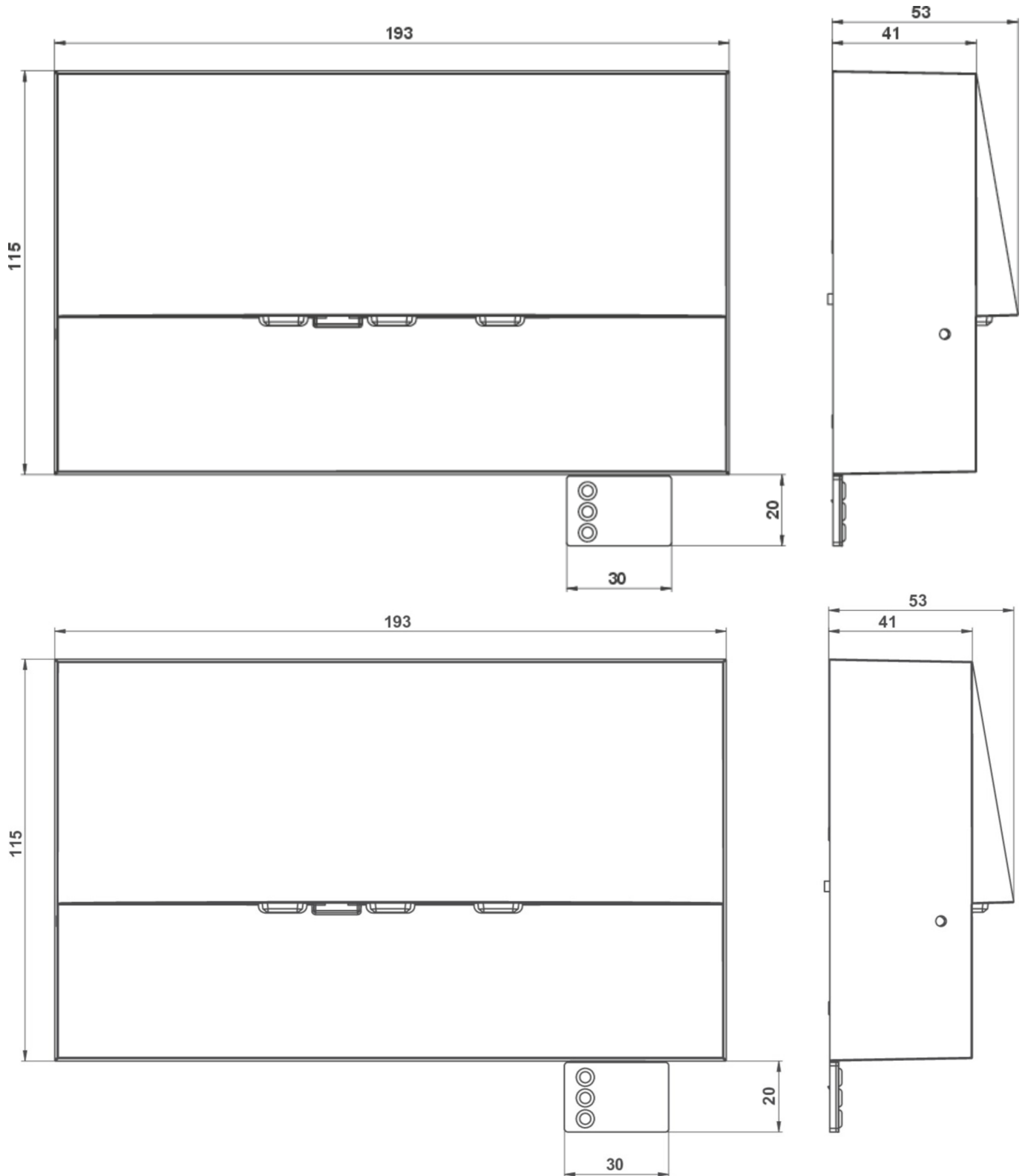
Luminaire type	Safety luminaire
Mounting	Wall mounting
Pictograph	No
Illuminant	LED
Housing material	Zinc die-cast
Housing color	Stainless steel
Protection type (IP)	IP20
Impact resistance (IK)	4
Certification	WEEE, CE
Insulation class	2
Monitoring	SelfControl (SC)
Bridging time	8 h
Battery	LiFePO4 6,4 V/1,2 Ah
Power max.	2,6 W
Power DS	1,7 W
Power BS	0,9 W
Ambient temperature DS	-5 °C - 35 °C
Ambient temperature BS	-5 °C - 40 °C
Depth	53 mm
Width	193 mm
Height	115 mm



Weight	0.15
Weight incl. packaging	0.18
Luminous flux mains	70 lm
Luminous flux emergency	70 lm
EAN	4262483023372



TECHNICAL DRAWING



As of: 04.11.2024 - Subject to technical changes and errors.