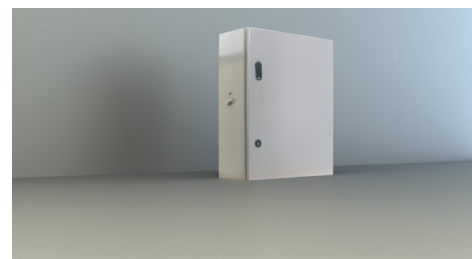




## Art.-Nr: NVGS203WLSE Individual battery supply

Individual battery supply with output voltage: 230V / AC square-wave voltage 2-wire system up to a distance of max. 500m. For supplying 1 or 2 luminaires with fluorescent lamps, incandescent lamps or LED luminaires at 100% luminous flux.

Technical design in accordance with DIN V VDE 0108-100 and DIN EN 60598-2-22. With deep discharge protection and integrated restart inhibit, threshold circuit. A maintenance-free, long-life and gas-tight PB battery provides the supply. Fully electronic and time-controlled charging ensures a longer battery life. The LED function check display shows operating statuses and errors. The check can be triggered manually using the in-built push button (not with WL).



More information  
[www.rp-group.com/en/item/NVGS203WLSE](http://www.rp-group.com/en/item/NVGS203WLSE)



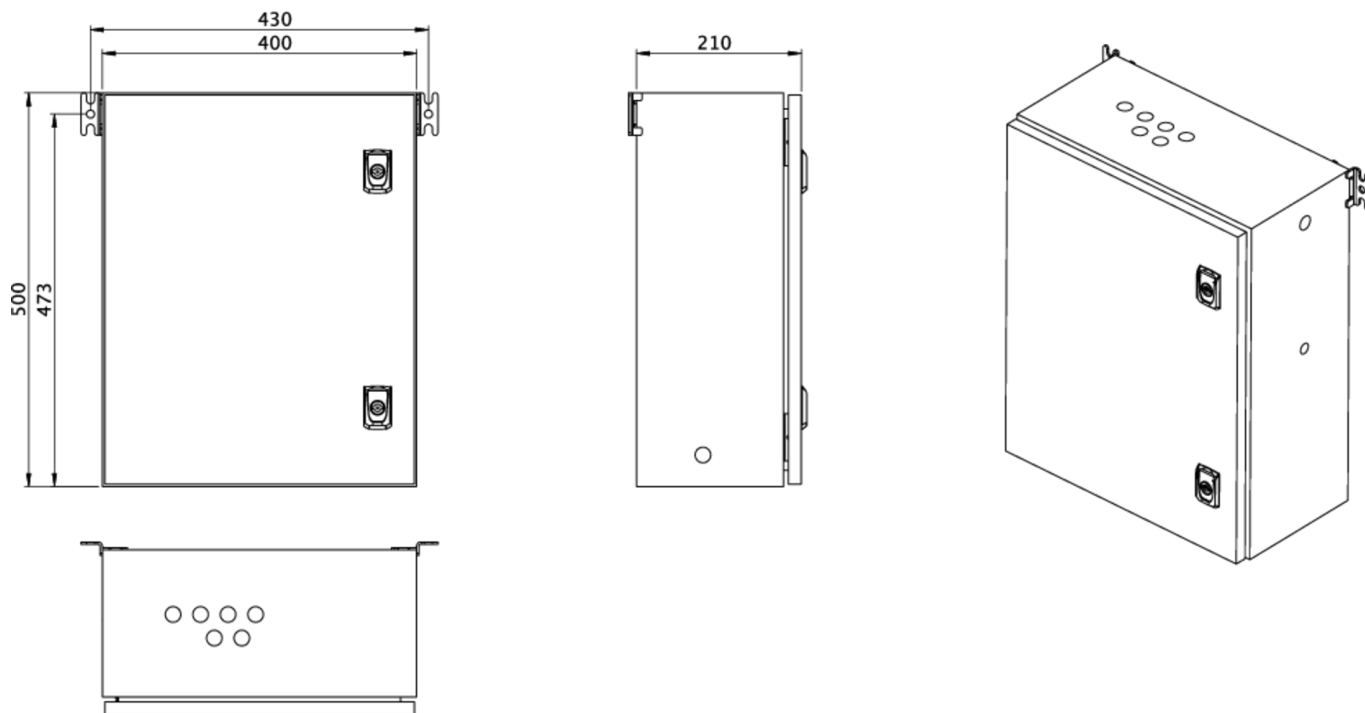
### TECHNICAL DATA

|                     |               |
|---------------------|---------------|
| Inserts             | - pcs.        |
| Number of circuits  | 2             |
| Loader              | Yes           |
| Modules SAM         | No            |
| IO modules          | No            |
| CCIF                | No            |
| Connectable         | No            |
| Outgoing UPS        | No            |
| Battery compartment | Yes           |
| Supply power 3 h    | 20 W          |
| Input voltage AC    | 230 V V       |
| Input frequency     | 50 / 60 Hz    |
| Output voltage AC   | 230V (sin.) V |
| Material            | Steel sheet   |
| Housing color       | Light grey    |
| Insulation class    | IP54          |
| Insulation class    | IP54          |
| Depth               | 210 mm        |
| Width               | 400 mm        |



|                       |          |
|-----------------------|----------|
| Height                | 500 mm   |
| Weight                | kg       |
| Customs tariff number | 85389091 |

**TRANS.MASSZEICHNUNG**



As of: 23.08.2024 - Subject to technical changes and errors.