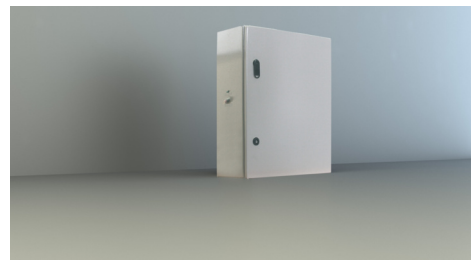




Art.-Nr: NVGS1301WL Individual battery supply

Individual battery supply with output voltage: 230V / AC square-wave voltage 2-wire system up to a distance of max. 500m. For supplying 1 or 2 luminaires with fluorescent lamps, incandescent lamps or LED luminaires at 100% luminous flux.

Technical design in accordance with DIN V VDE 0108-100 and DIN EN 60598-2-22. With deep discharge protection and integrated restart inhibit, threshold circuit. A maintenance-free, long-life and gas-tight PB battery provides the supply. Fully electronic and time-controlled charging ensures a longer battery life. The LED function check display shows operating statuses and errors. The check can be triggered manually using the in-built push button (not with WL).

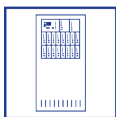


More information
www.rp-group.com/en/item/NVGS1301WL



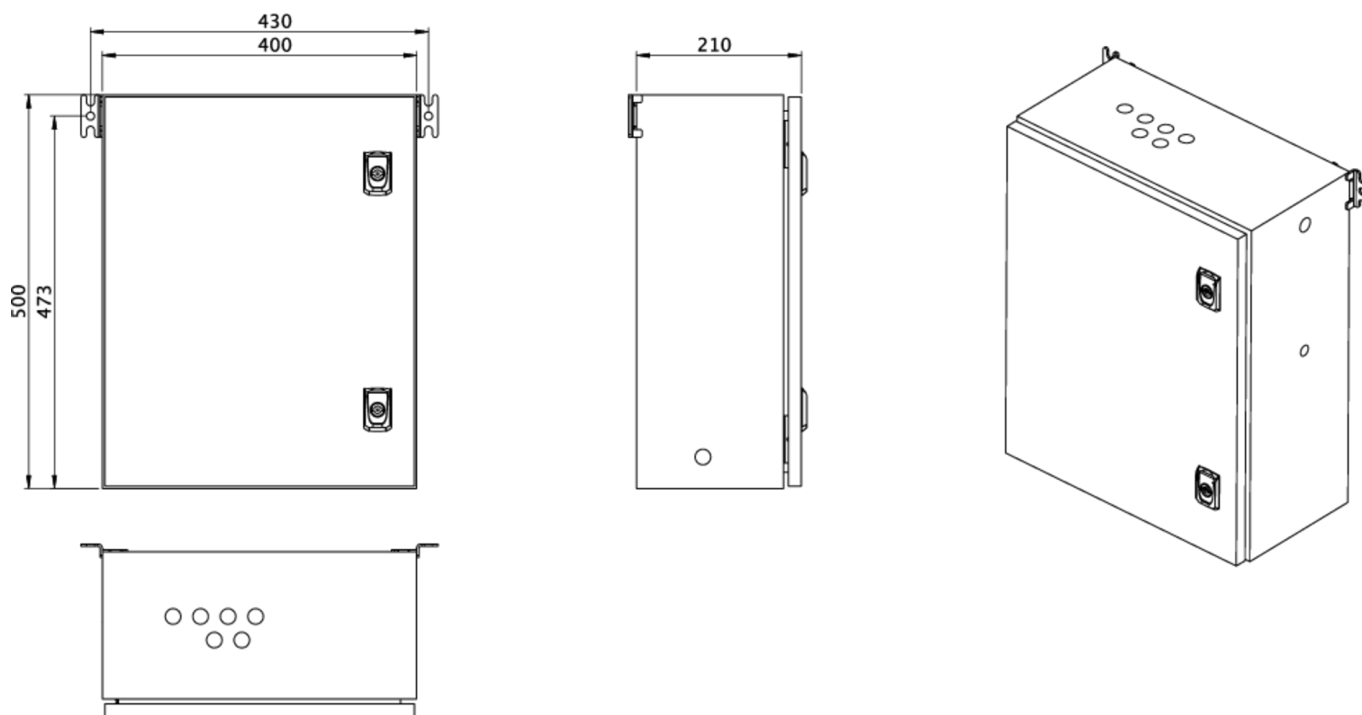
TECHNICAL DATA

Inserts	- pcs.
Number of circuits	2
Loader	Yes
Modules SAM	No
IO modules	No
CCIF	No
Connectable	No
Outgoing UPS	No
Battery compartment	Yes
Supply power 1 h	130 W
Input voltageAC	230 V
Input frequency	50 / 60 Hz
Output voltage AC	230 V
Material	Steel sheet
Housing color	Light grey
Insulation class	IP54
Insulation class	IP54
Depth	210 mm
Width	400 mm



Height	500 mm
Weight	kg
Customs tariff number	85389091

TRANS.MASSZEICHNUNG



As of: 02.10.2024 - Subject to technical changes and errors.