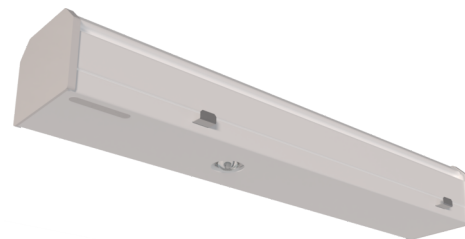




Art.-Nr: LBLT039ML

**Emergency light Centralised power supply systems
3-phase conductor rail, Central power supply (ML), CPS, ,
IP20, Metal, White**



Emergency luminaire with ERT-LED for Trilux E-Line trunking rail profile with 7-wire through wiring. The innovative integrated lens carrier with quick-mounting device enables the flexible use of different lens types depending on the application. Round and corridor lenses are already included in the scope of delivery for each light and enable perfect adaptation to the respective installation situation. Additional lenses for high ceilings are available, too.

Control and monitoring via central power supply system.



More information
www.rp-group.com/en/item/LBLT039ML



TECHNICAL DATA

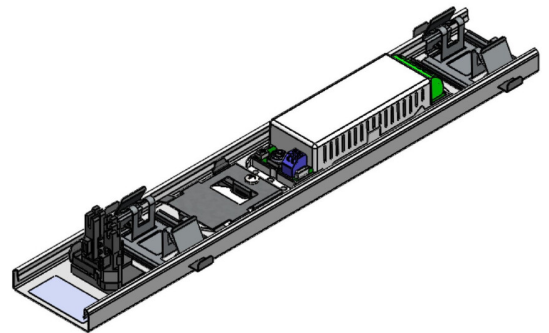
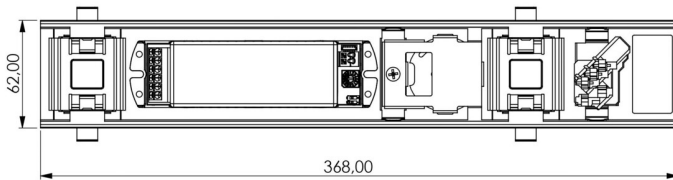
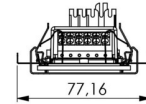
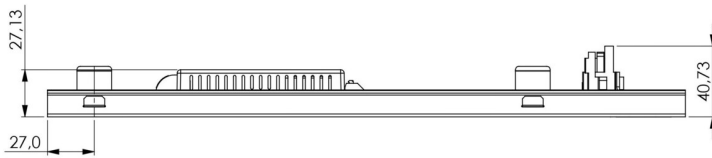
Luminaire type	Emergency light
Mounting	3-phase conductor rail
Pictograph	No
Illuminant	LED
Housing material	Metal
Housing color	White
Protection type (IP)	IP20
Impact resistance (IK)	≥ 3
Certification	WEEE, CE
Insulation class	1
Supply	Centralised power supply systems
Monitoring	Central power supply (ML)
Bridging time	CPS
Battery	/
Operating mode	single luminaire switching
Input voltage AC	230 V
Input frequency	50 / 60 Hz
Input voltage DC	216 V
Power max.	5,4 W



Power maintained	5,4 W
Power non-maintained	1,1 W
Ambient temperature maintained mode	-5 °C to 40 °C
Ambient temperature non-maintained mode	-5 °C to 40 °C
Depth	368 mm
Width	62 mm
Height	40.7 mm
Weight	0.37
Weight incl. packaging	0.52
Connection cross-section	2.5 mm ²
Switching input	Yes
Emergency light blocking	No
Battery connection	No
Dimming function	Yes
Luminous flux mains	470 lm
Luminous flux emergency	470 lm
Customs tariff number	94056180
EAN	4260682150448



TECHNICAL DRAWING



ACCESSORY LIST

- LSYS-H4 -
- LSYS-S4 -
- LSYS-B4 -

As of: 15.04.2025 - Subject to technical changes and errors.