



## Exit sign

**Art.-No.: KMUK403SC-SW**

Slim convex escape sign light with clear closed hood. The universal mounting includes wall and ceiling surface mounting, as well as the possibility of recessed ceiling installation in conjunction with the mounting frame. Planning safety for marking the escape and rescue routes for one- or two-sided lettering is ensured by the tool-free, variable use of the pictograms on site. The pictograms are internal and are inserted solvent-free. The pictogram set (right, left, top and bottom arrow) is included as standard.

Exit sign according to EN 60598-1, EN 605982-22 and EN 1838.



## TECHNICAL DATA

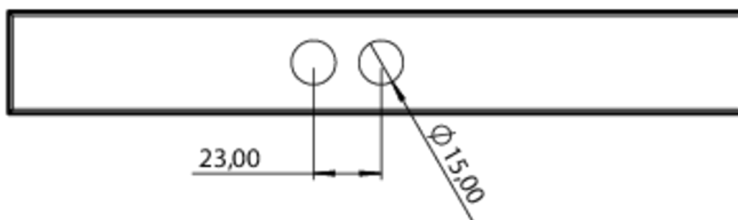
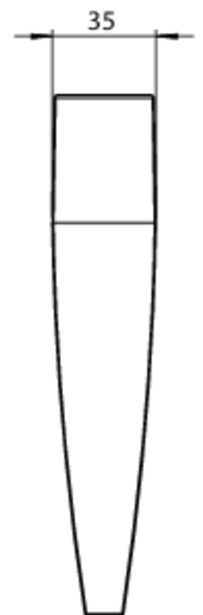
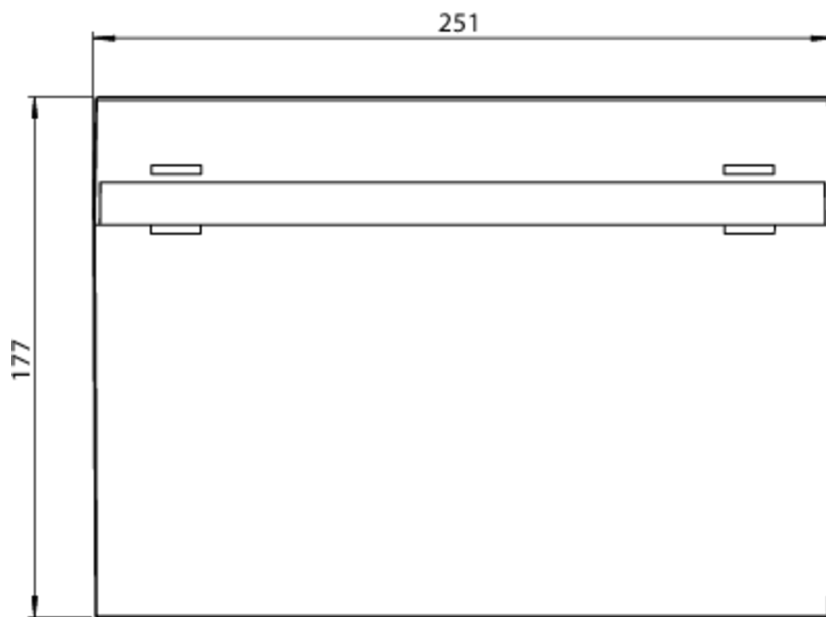
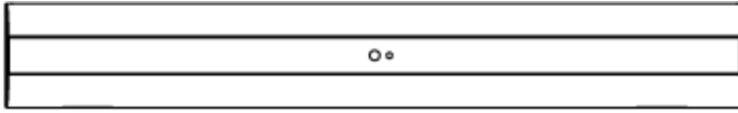
Luminaire type	Exit sign
Mounting	Universal
Viewing distance	24 m
Pictograph	Set
Illuminant	LED
Housing material	Polycarbonate
Colour	RAL 9003
Mechanical rating IP	43
Impact resistance IK	3
Protection class	2
Supply	Single battery
Monitoring	Self-Control
Operation time	3 h
Battery	3,2V / 1,5Ah LiFePO4
Operation mode	Maintained mode
Input Voltage AC	230 V
Input Frequency Hz	50 / 60 Hz
Power consumption max.	3,7 W
Power consumption maintained	3,2 W
Power consumption non-maintained	0,3 W
Ambient temperature maintained mode	0 °C / 40 °C
Ambient temperature non-maintained mode	0 °C / 40 °C
Length	35 mm



Width	251 mm
Height	177 mm
Weight	0.55 kg
Weight incl. Packaging	0.65 kg
Connection cross-section	1.5 mm
Switching input L'	No
Emergency light blocking	No
Battery connector	Plug
Dimming function	No
Customs tariff number	94056120
Coutry of origin	CHINA
EAN	4260766553837



**TECHNICAL DRAWING**





## ACCESSORIES

DSA	- cord suspension set 1,5m
KME-EB	- KM recessed frame with test button (SB)
AWKSU	- Wall bracket short 60x47mm, white
2PW-EB	-
KMBE	- concrete recessed housing
BALLPLX-KMU	- Ball protection 380x280x60mm incl. fastening