



**Art.-Nr: AGCC009-AZ**  
**Exit sign Centralised power supply systems**  
**CS\_VALUE\_MountingMethod.Deckeneinbau-Seil, Without monitoring, CPS, 50m, IP20, Zinc die-cast, Anthracite**

Modern zinc die-cast emergency exit sign luminaire with wire suspension for recessed mounting in the ceiling. Escape and emergency routes can be identified on either one or two sides.

It is part of the A series luminaire family, which provides solutions for any mounting and has won the German Design Award for its uniform, straight-line design.

Two requested pictograms (arrow to the right, left, up, down or white) are supplied as standard.



More information  
[www.rp-group.com/en/item/AGCC009-AZ](http://www.rp-group.com/en/item/AGCC009-AZ)



## TECHNICAL DATA

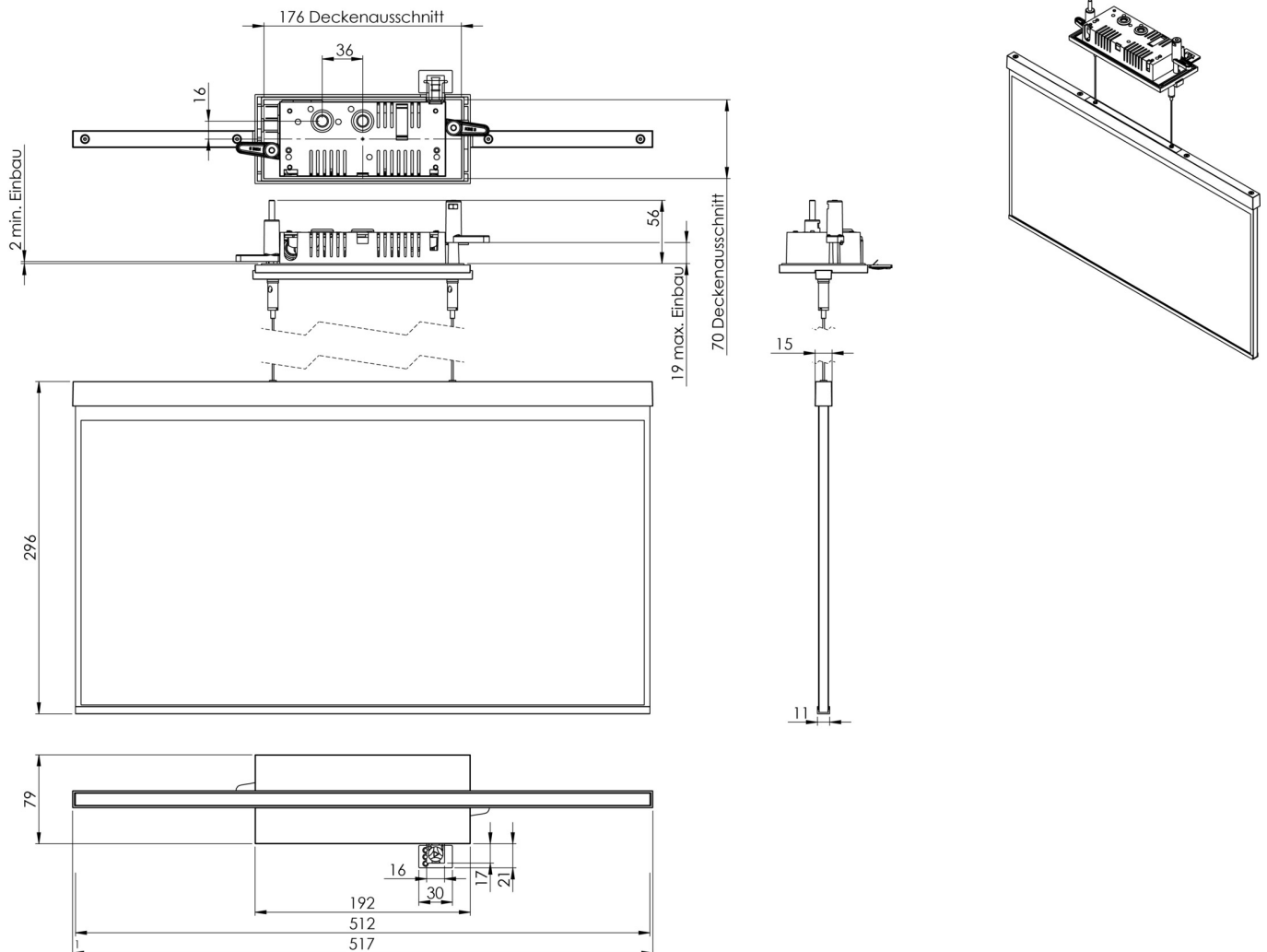
Luminaire type	Exit sign
Mounting	CS_VALUE_MountingMethod.Deckeneinbau-Seil
Recognition distance	50m
Pictograph	acc. to Specification
Illuminant	LED
Housing material	Zinc die-cast
Housing color	Anthracite
Protection type (IP)	IP20
Impact resistance (IK)	≥ 3
Certification	WEEE, CE
Insulation class	2
Supply	Centralised power supply systems
Monitoring	Without monitoring
Bridging time	CPS
Battery	/
Operating mode	Permanent circuit
Input voltageAC	230 V
Input frequency	50 / 60 Hz



Input voltage DC	100-254 V
Power max.	5,2 W
Power DS	5,2 W
Power BS	0 W
Ambient temperature DS	-5 °C - 40 °C
Ambient temperature BS	-5 °C - 40 °C
Depth	79 mm
Width	512 mm
Height	309 mm
Installation length	176 mm
Installation width	68 mm
Installation height	40 mm
Weight	2.44
Weight incl. packaging	3.09
Connection cross-section	1.5 mm <sup>2</sup>
Switching input	No
Emergency light blocking	No
Battery connection	No
Dimming function	No
Customs tariff number	94056180
EAN	4260659565060



## TECHNICAL DRAWING



As of: 18.10.2024 - Subject to technical changes and errors.