

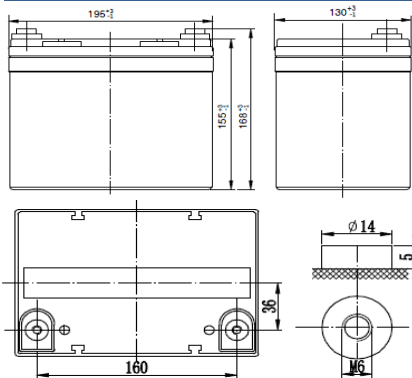
# RPower OGiV121250HP (12V 33Ah AGM High-Power-Battery)

with UL94 V-0 Housing

EAN: 4260349823623

Floating Life at 20°C designed for up to 12 years

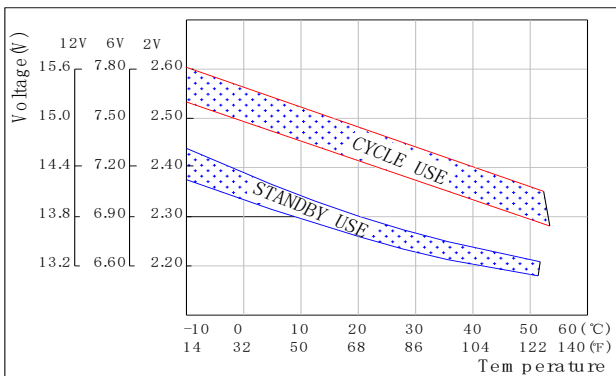
## Dimensions



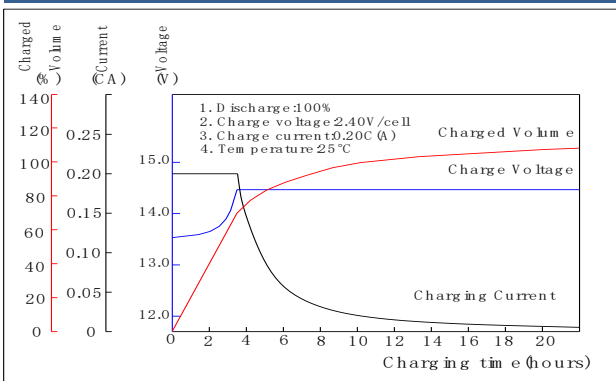
## Specifications

Nominal Voltage		12V
Capacity (10hr@25°C@1.80V/C)		33Ah
Dimensions	Length	195mm (7.68inch)
	Width	130mm (5.12inch)
	Height	155mm (6.10inch)
	Total Height	168mm (6.61inch)
Approx. Weight		11.50kg (25.35lbs)
Maximum charging current		9.9A
Maximum discharge current		330A (5sec.)
Internal resistance		Approx. 7mΩ
Capacity affected by temperature (20hr)	40°C	103%
	25°C	100%
	0°C	86%
	-15°C	65%
Self-discharge (25°C)	3 month	Remaining Capacity: 91%
	6 month	Remaining Capacity: 82%
	12 month	Remaining Capacity: 65%
Nominal operating temperature		25°C ±3°C (77°F±5°F)
Operating temperature range		-20°C~55°C (-4°F~131°F)
Float charging voltage (25°C)		13.65 to 13.80V
Cyclic charging voltage (25°C)		14.40 to 15.00V
Terminal material		Copper

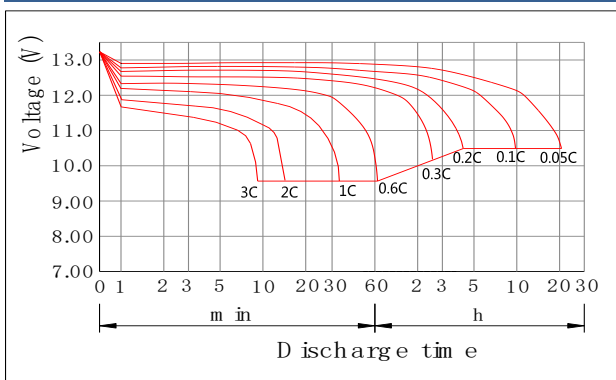
## The Relationship for Charging Voltage and Temperature



## Charging Characteristics (25°C)



## Discharge Characteristics (25°C)



## Constant Current Discharge Characteristics (Ampere / Battery, 25°C)

FV / TIME	5min	10min	15min	20min	30min	45min	1h	2h	3h	4h	5h	6h	8h	10h	20h
10.98V	114,22	87,12	68,73	56,34	42,40	31,27	25,94	15,10	11,49	9,08	7,61	6,59	5,29	3,18	1,67
10.80V	118,00	90,00	71,00	58,20	43,80	32,30	26,80	15,62	11,90	9,41	7,88	6,82	5,49	3,30	1,75
10.50V	130,00	96,50	76,00	62,00	45,70	33,70	27,80	16,23	12,37	9,79	8,20	7,12	5,73	3,44	1,83
10.20V	142,00	102,00	80,00	64,50	47,50	35,00	28,40	16,61	12,67	10,03	8,41	7,30	5,88	3,54	1,88
10.02V	150,00	106,00	82,10	66,10	48,40	35,50	28,60	16,76	12,78	10,12	8,49	7,38	5,95	3,58	1,90
9.60V	165,00	115,00	86,70	69,50	50,40	36,80	28,90	16,96	12,95	10,26	8,61	7,49	6,04	3,64	1,94

## Constant Power Discharge Characteristics (Watt / Battery, 25°C)

FV / TIME	5min	10min	15min	20min	30min	45min	1h	2h	3h	4h	5h	6h	8h	10h	20h
10.98V	1248,72	969,94	760,85	650,50	494,84	372,87	302,60	170,06	127,05	102,88	88,06	75,95	59,61	37,28	19,30
10.80V	1290,00	1002,00	786,00	672,00	511,20	385,20	312,60	175,99	131,60	106,60	91,28	78,78	61,84	38,73	20,14
10.50V	1422,00	1074,00	822,00	702,00	529,80	400,20	324,00	182,74	137,05	110,81	94,93	81,97	64,48	40,27	21,01
10.20V	1548,00	1140,00	876,00	732,00	546,60	411,00	331,80	187,47	140,68	113,81	97,55	84,25	66,36	41,84	21,84
10.02V	1620,00	1182,00	900,00	750,00	558,00	417,60	333,60	188,82	141,78	114,76	98,41	85,07	67,05	42,48	22,20
9.60V	1788,00	1260,00	912,00	786,00	576,00	424,20	334,20	189,49	142,37	115,30	98,92	85,56	67,51	43,06	22,48